

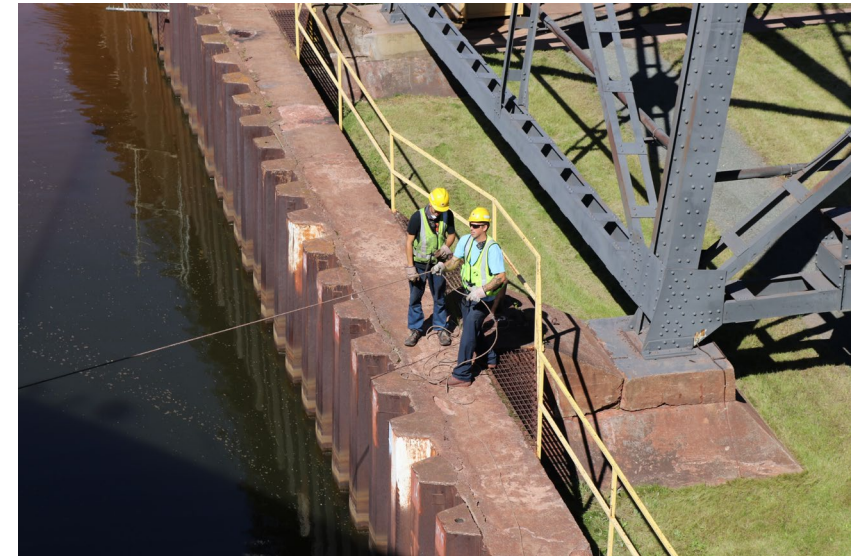


Lake Carriers' Association 2021 Navigation Season

Eric Peace, Director of Operations

Season to Date

- Iron Ore 32 million tons as of August 2021
 - Up 31.8 Percent from 2020
 - 4.5 Percent above 5-year average
- Limestone 17.4 million tons as of August 2021
 - Up 9 Percent from 2020
 - Nearly equal to 5-year average
- Ports on the Great Lakes-St. Lawrence
 - 20.7 million metric tons of cargo as of August 2021
 - 2,146 vessels up 4.6 Percent from 2020



LAKE CARRIERS' ASSOCIATION



Remainder 2021 Season

- Virtually entire fleet sailing
- Orders booked up to and after Soo Lock closure
- Weather starting to turn
- Ice season?



Questions?



Thank you

- Jim Weakley, President
(440) 333-9995 / weakley@lccaships.com
- Eric Peace, Director of Operations and Communications
(440) 333-9996 / peace@lccaships.com
- Katie Gumeny, Office Manager/Treasurer
(440) 333-9997 / gumeny@lccaships.com